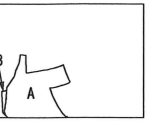


V (世界測地系) 兵庫県明石市住吉三丁目土地区画整理土地所在図

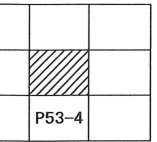
+51.800

-144.750

イ 1263-10(1/2)



A 魚住町住吉三丁目
B 魚住町西岡字能登ヶ内



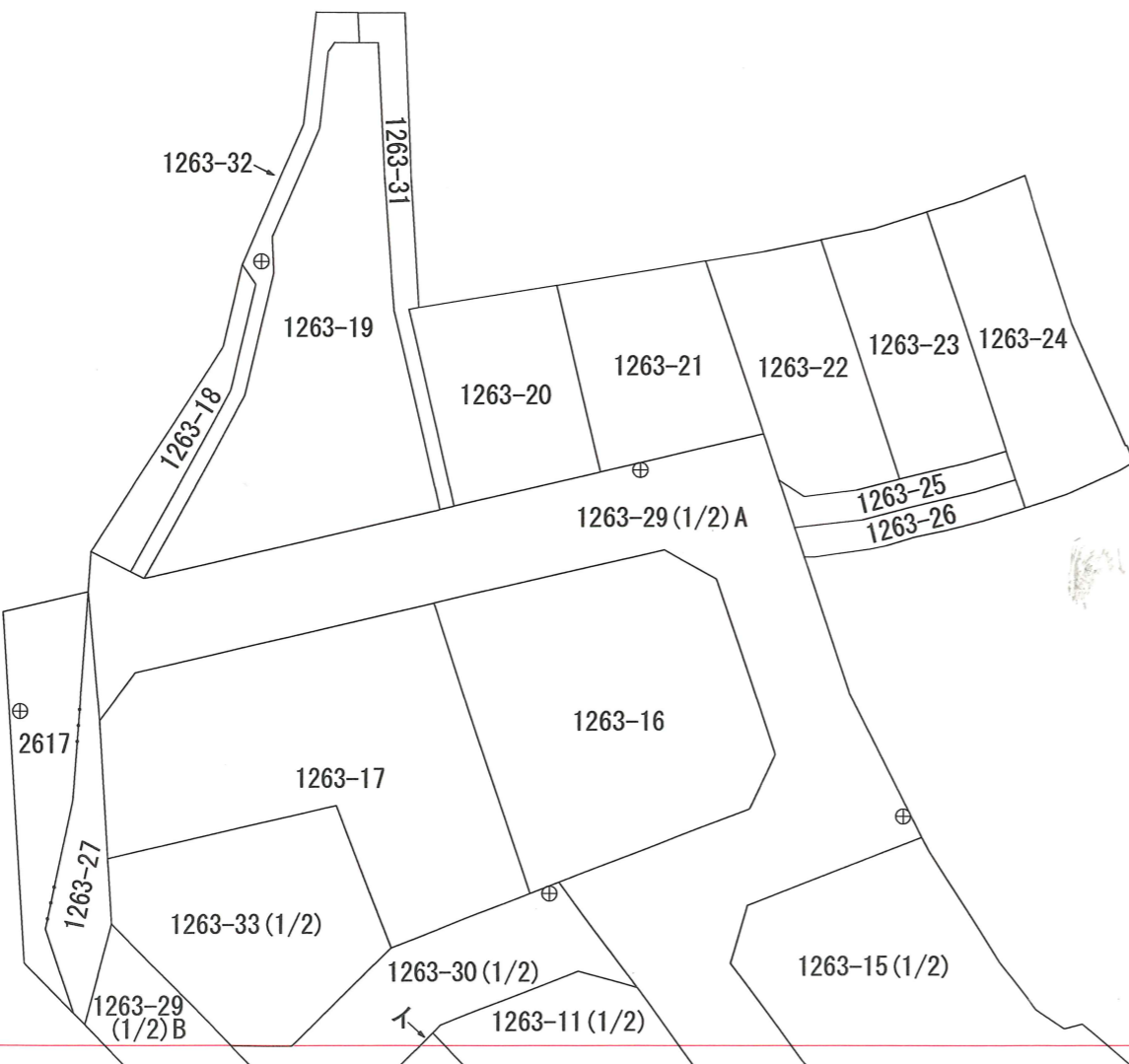
⊕

⊕

⊕

⊕

⊕



-144.875

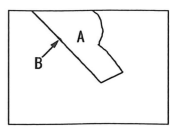
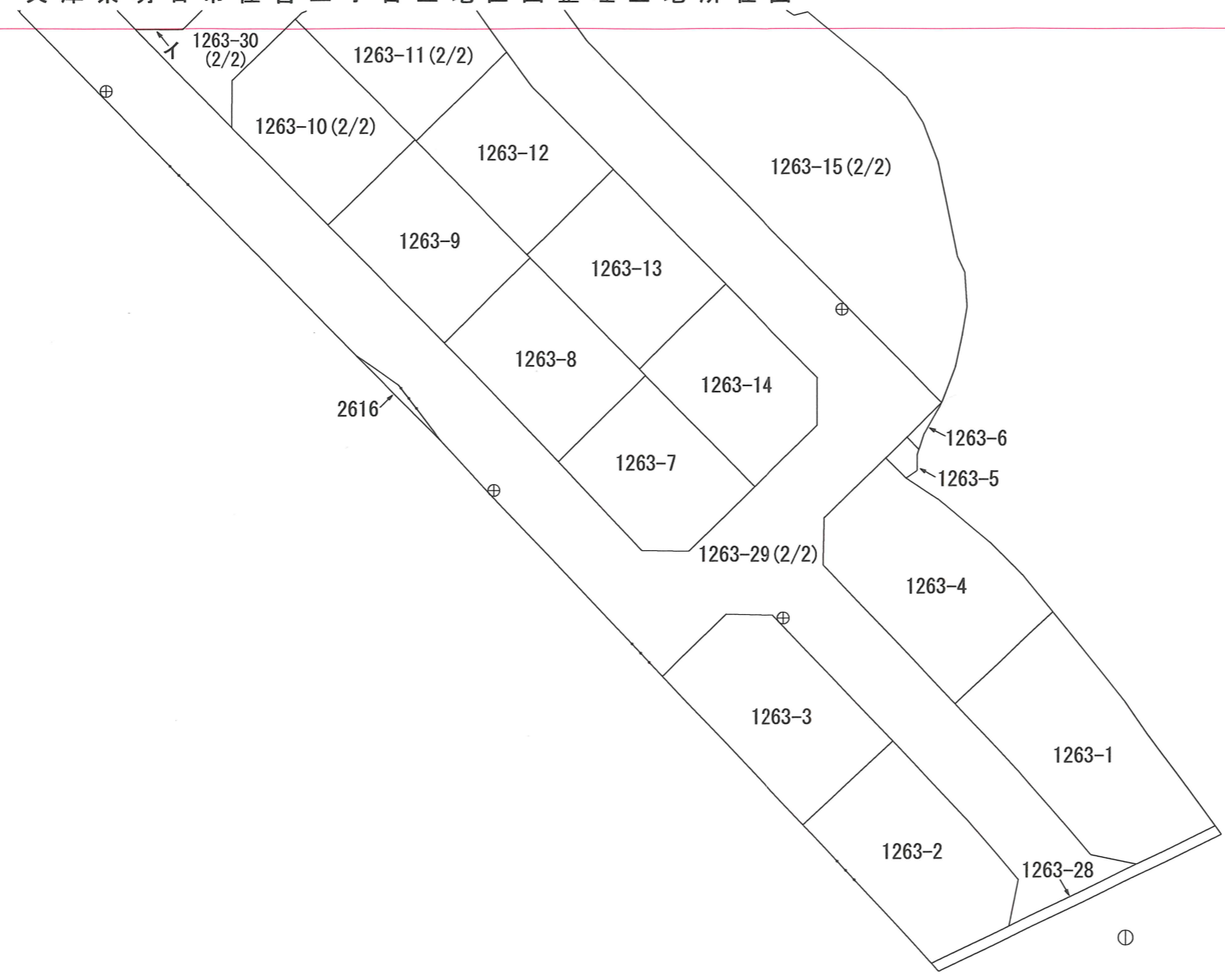
+51.625

⊕

⊕

明 P53-2	2017・6調査
1:500	2017・6測図

イ 1263-33(2/2)



A 魚住町住吉三丁目
B 魚住町西岡字能登ヶ内

