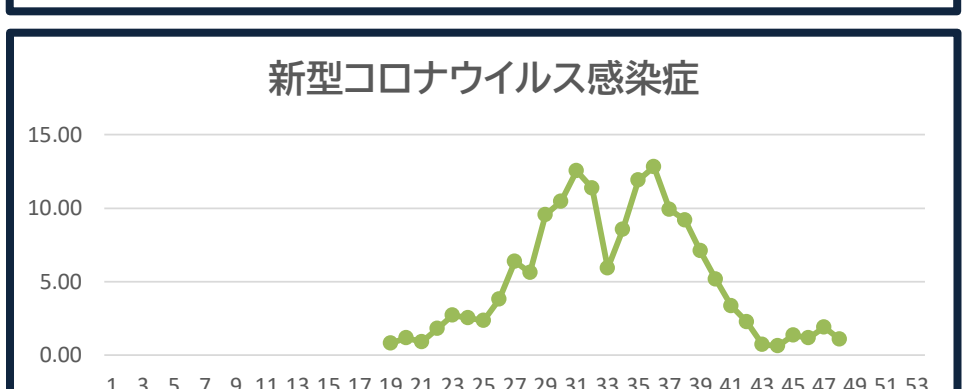
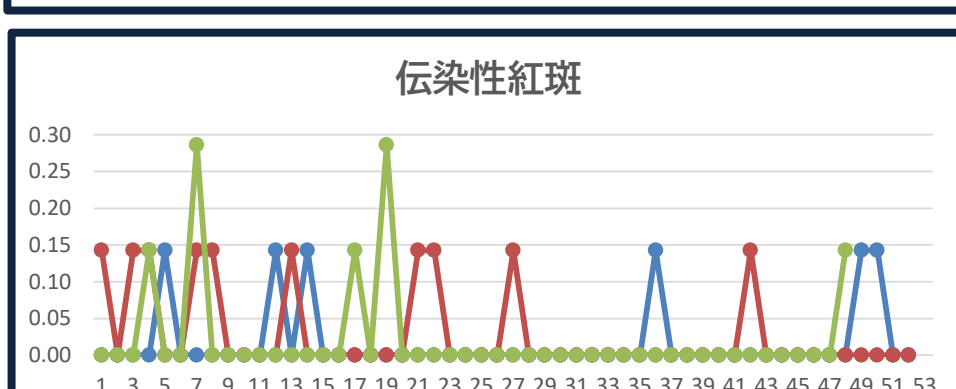
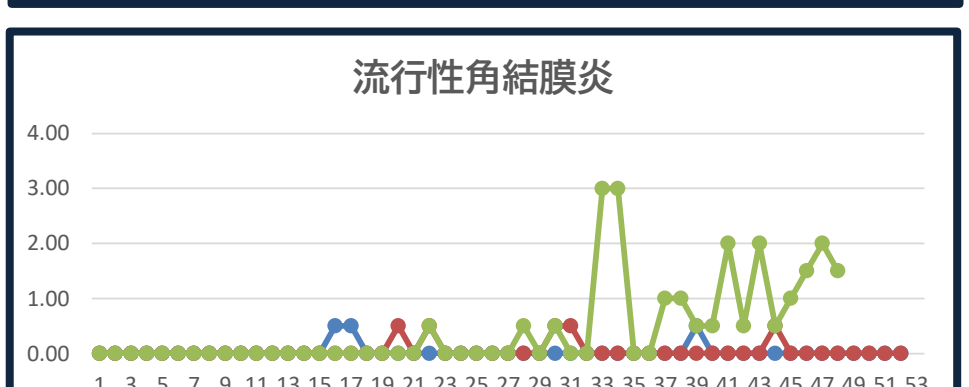
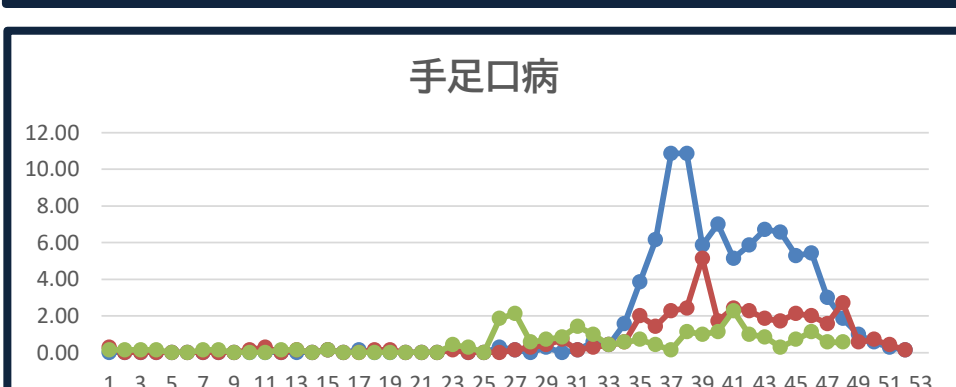
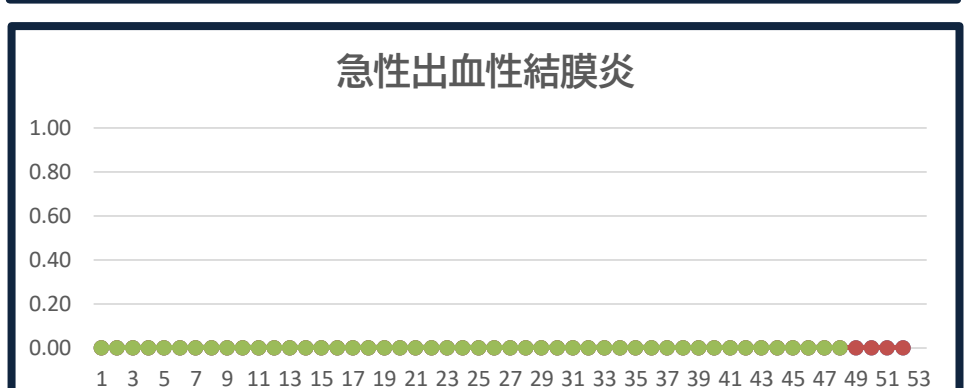
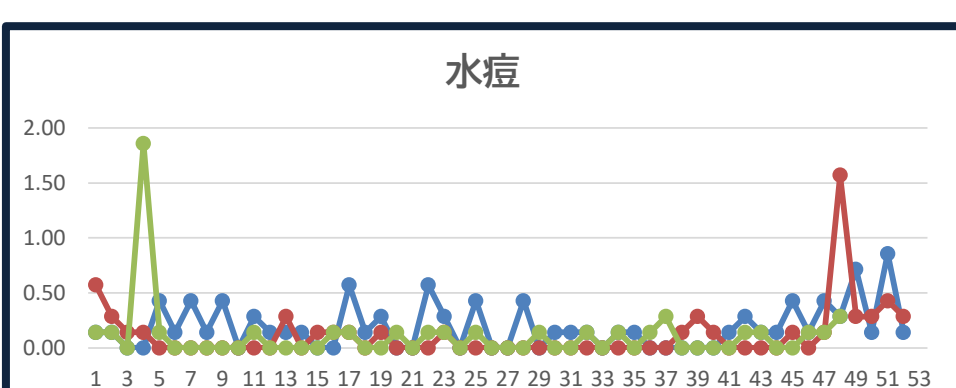
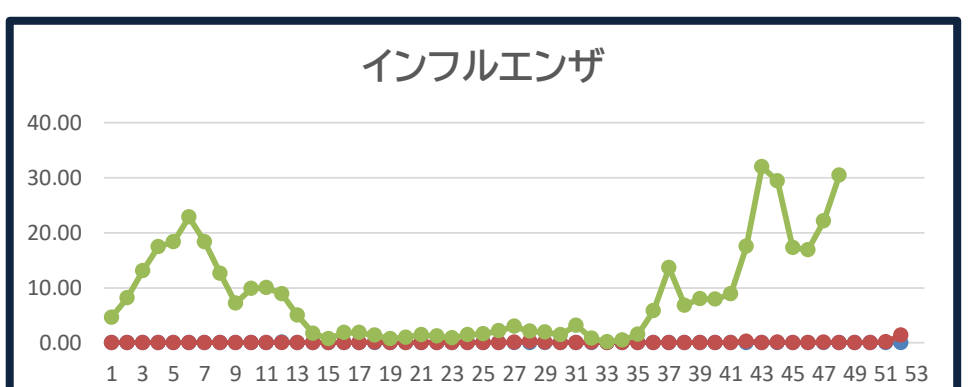
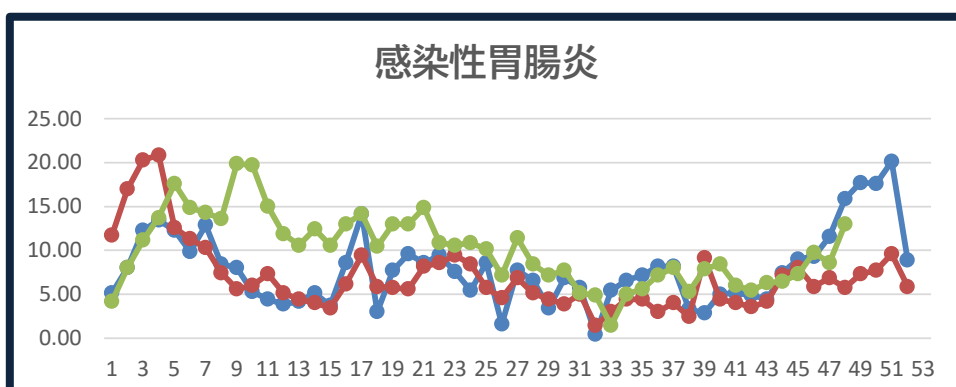
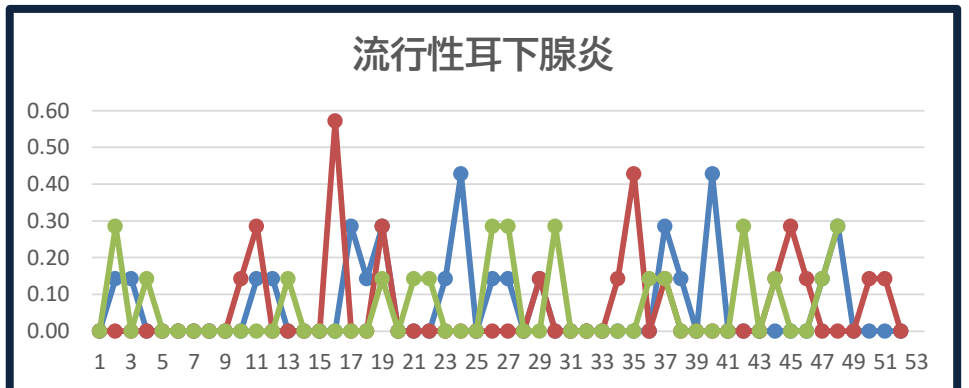
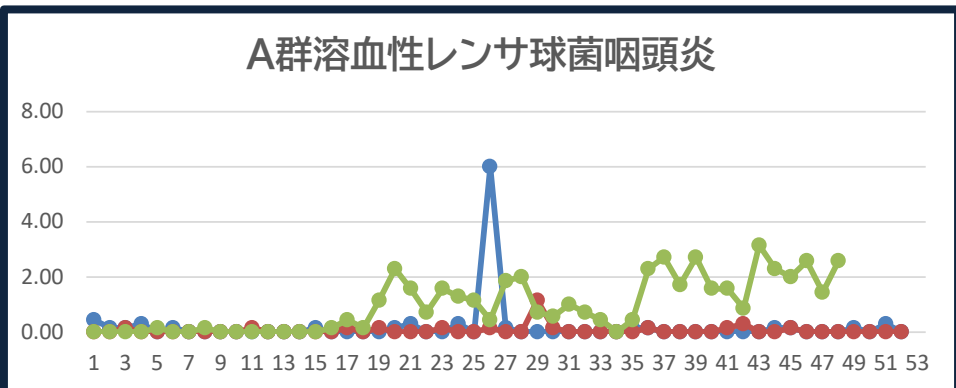
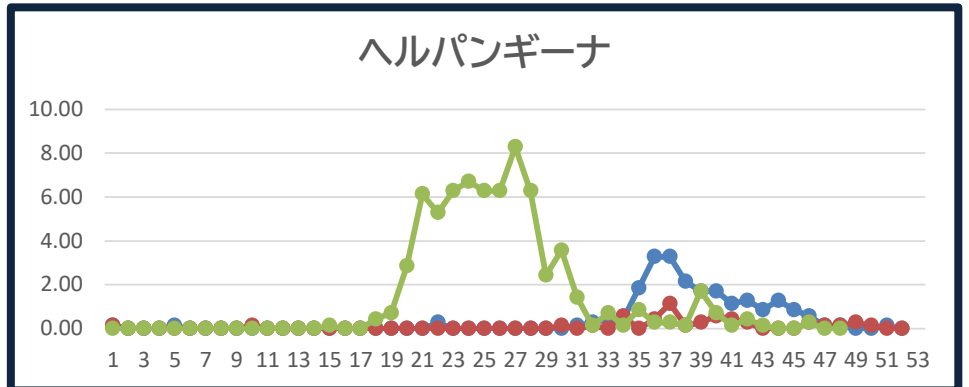
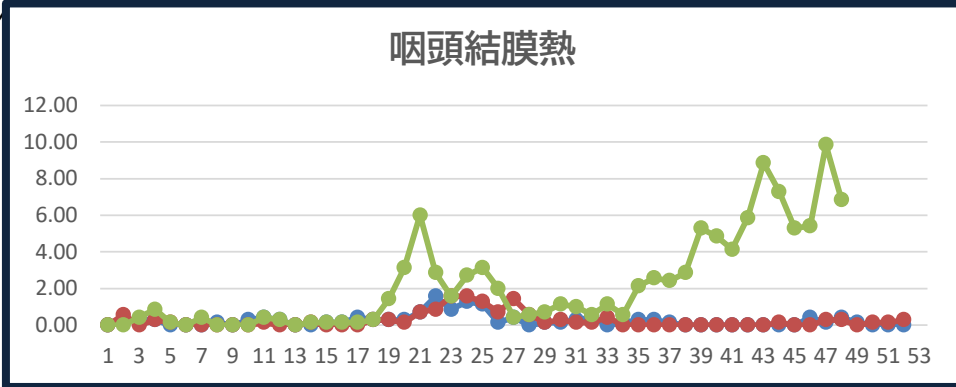
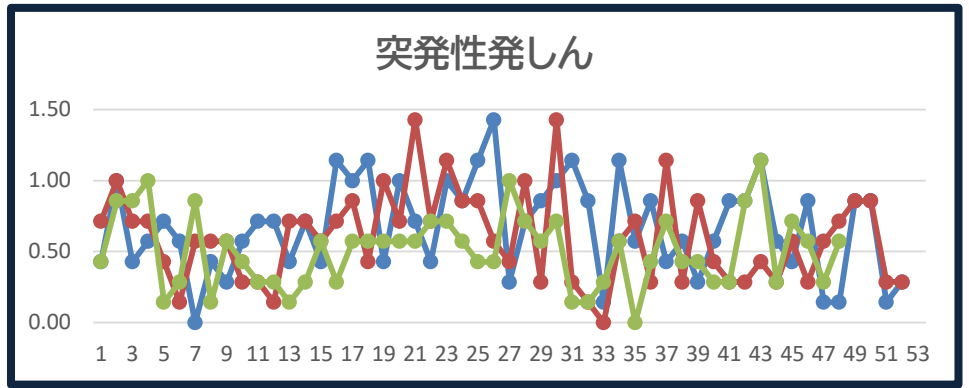
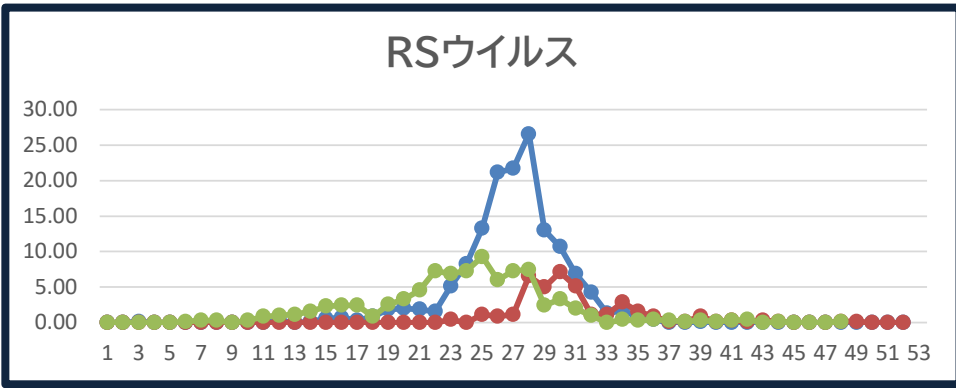




定点把握対象感染症発生状況(グラフ/過去3年間)

● 2021 ● 2022 ● 2023



＼気をつけよう／

# インフルエンザ



市内定点医療機関当たり患者数(48週):30.45

対策

## 手洗い



手首まで丁寧に  
洗いましょう

## 予防接種



重症化防止に  
期待されます

## マスク



人の多いところでは  
マスクをしましょう